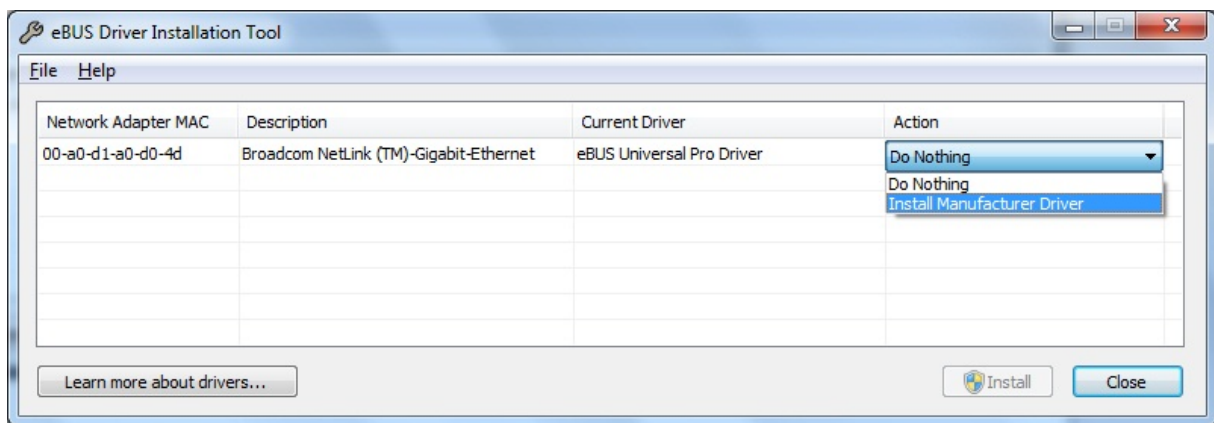


## Installation guide for Pleora iPORTPT1000-CL for usage with LabSoft

### Installation steps

1. Install your LabSoft version as usual (dependent on color and ActiveX and program version)
2. Install Pleora add-on of LabSoft: "19\_Lmk\_LabSoft\_Pleora\_AddOn\_\*.exe"
3. Install Driver for Pleora hardware: "eBUS SDK 2.0.1.1951.exe".
4. Choosing the installed Manufacturer Driver as hardware driver for Gigabit-Ethernet hardware adapter on the PC by using: Startmenu/Programs/Pleora Technologies Inc/Tools/eBUS Driver Installation Tool



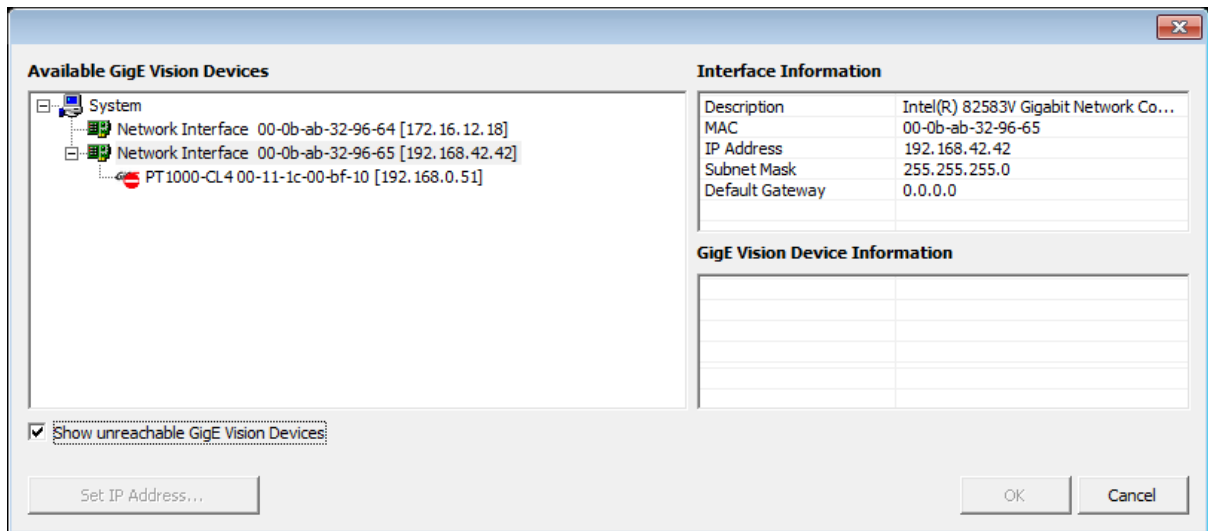
5. In the case there is an error message because of missing support of Microsoft .Net 2.0 install "dotnetfx.exe" and repeat point 3.
6. If you have previously worked with MVTitan or Framelink grabber you have to edit file "camera.ini". You find this file either in the directory "C:\program files\TechnoTeam\LabSoft\Camera\your\_Camera\_number\" or (Windows7) in "C:\Users\your\_name\AppData\Local\VirtualStore\Program~Files\TechnoTeam\LabSoft\Camera\your\_Camera\_number\". See example below for needed changes.
7. Start LabSoft as usual and select your camera-lens-combination. If there is opened an additional dialog, follow the instruction in the last section of this document.

### Needed Changes in file "camera.ini"

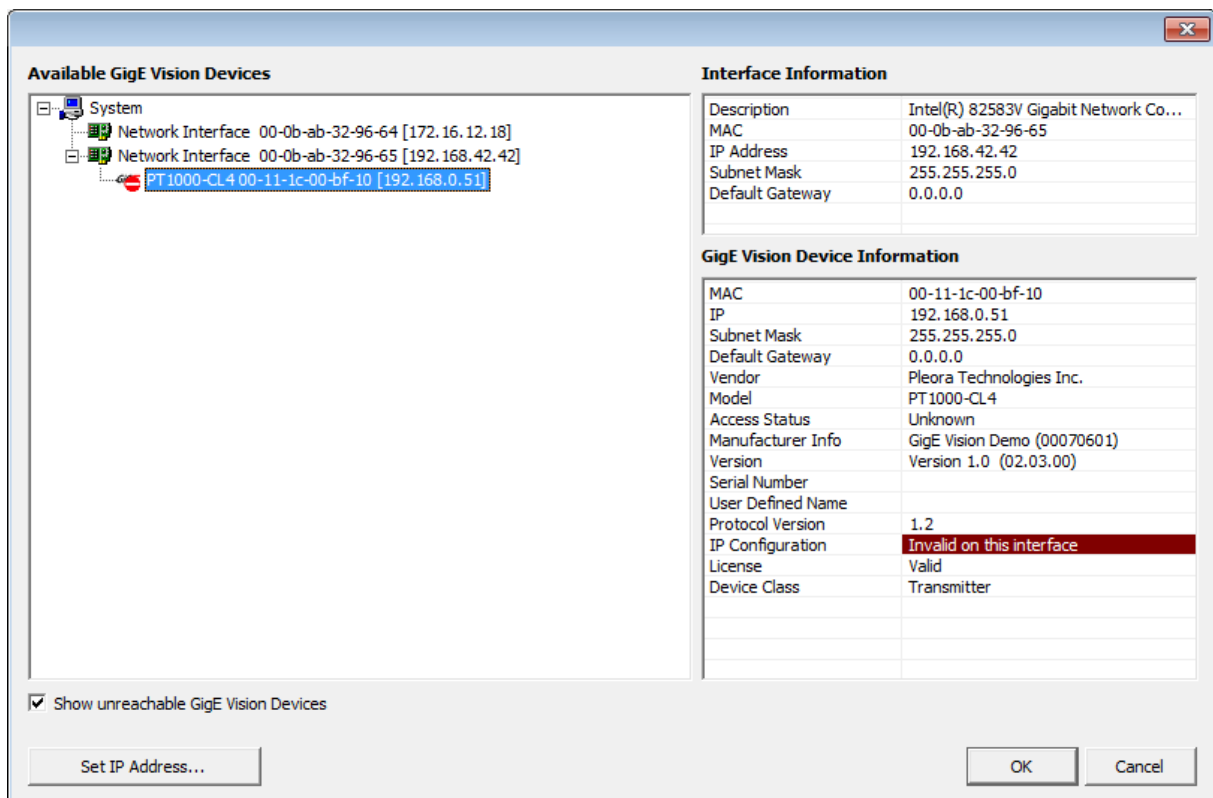
Old content:	New content:
[Sektion] DLL=titandx4.dll File=# Section=PropertyList  [PropertyList] ...	[Sektion] DLL= <b>pleoradx4.dll</b> File=# Section=PropertyList  [PropertyList] <b>PLEORA_PIXELOFFSET=1</b> ...

## In the case of connection problems

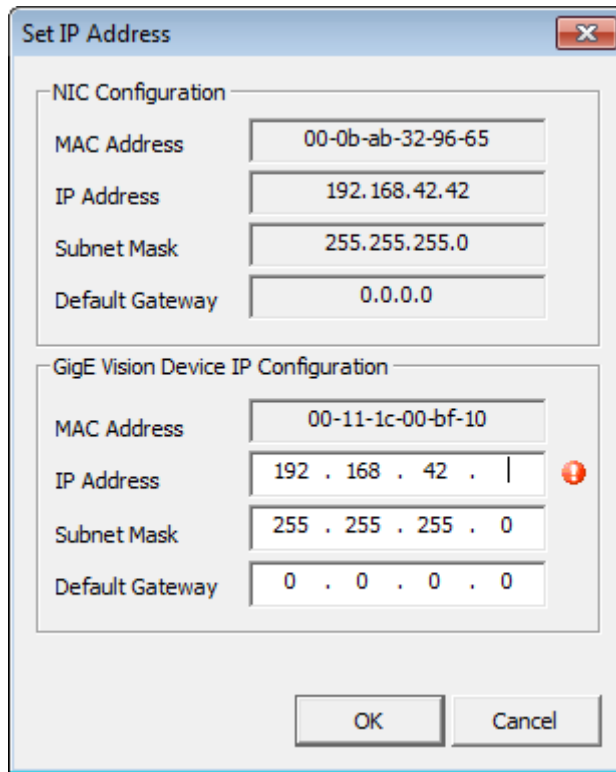
If you choose your camera-lens-combination via menu point “Camera | Change” and there is the following dialog:



1. Check “Show unreachable GigE Vision Devices”
2. Select “PT 1000-CL 4...”



3. Press “Set IP Address...”



The image shows a 'Set IP Address' dialog box with two sections: 'NIC Configuration' and 'GigE Vision Device IP Configuration'. Each section has four input fields for MAC Address, IP Address, Subnet Mask, and Default Gateway. The 'GigE Vision Device IP Configuration' section has a red exclamation mark icon next to its IP Address field.

Section	Field	Value
NIC Configuration	MAC Address	00-0b-ab-32-96-65
	IP Address	192.168.42.42
	Subnet Mask	255.255.255.0
	Default Gateway	0.0.0.0
GigE Vision Device IP Configuration	MAC Address	00-11-1c-00-bf-10
	IP Address	192 . 168 . 42 .
	Subnet Mask	255 . 255 . 255 . 0
	Default Gateway	0 . 0 . 0 . 0

4. Choose appropriate IP address (last number in line with exclamation point) and press "OK".
5. Camera connection should work now.